

CMEA High School Audition Repertoire

Vocal

4-Year Rotation (revised May 15, 2017)

In order to insure consistent and fair adjudication, all students must use the same edition of a given solo. Students must use the required edition of the books/pieces indicated. The publishers/distributors are listed to help you locate a given etude book or piece.

All students are required to perform his/her solo for adjudication using the original copy of the piece. Students failing to use the original copy will be disqualified from the participating in the festival.

Students may audition in as many areas as they choose; however, vocal students may audition on one voice part only – Soprano, Alto, Tenor, or Bass. Directors must submit their student's ensemble preference during registration; however, **the final decision for ensemble placement rests with the appropriate festival committees.**

CMEA Policies Regarding Students With A Disability

It is the responsibility of the child's music director to notify the Region Director of any modifications required for students who may have an Individualized Education Program (IEP) or 504 plan in anticipation of the CMEA sponsored Adjudication or Festival processes. Any request for modifications must be made 30 days prior to the said CMEA sponsored event. It is also the responsibility of the child's school district to fund any costs incurred by such modifications.

Special thanks to Jay Stevens at Foundry Music in New Haven, CT for verifying this repertoire information and availability.

VOCAL REQUIREMENTS

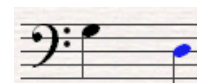
SCALES

Starting pitches for the required scales are notated below for each voice part.

Soprano – G and D



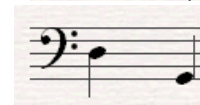
Tenor – G and D



Alto – D and G



Bass – D and G



Scales will be sung from memory in the following pattern, using either solfeggio or on a neutral syllable:
M.M. quarter note = 92



SIGHT-READING PROCEDURES

The following procedures have been approved by the CMEA Student Affairs Commission. The following is designed to assist teachers in preparing students for this component of the adjudication as well as offering a systematic administration of this part of the adjudication. For Region and All State auditions pre-recorded vocal prompts are used and will be made available prior to the audition via the CMEA website.

1. All singers will read the same single-line melody.
2. Students may elect to sing the melody from either the bass or treble clef versions; both will be available.
3. Singers may choose to sing solfege syllables, numbers, or any neutral syllable. Student's score will not be affected by their choice.
4. The example will be 8 measures long.
5. The example selected will be in one of these major keys: C, G, D, F, Bb, Eb
6. The example may utilize note/rest values from sixteenth through whole in value including dotted notes.
7. The meter will be selected from: 3/4, 4/4, or 6/8
8. The recording will provide the pitch "do" and a tempo of 76 BPM.
9. The student will have 60 seconds to practice. During this time students may audiate, hum, or sing quietly to him/herself. Adjudicators will offer no prompts.
10. Adjudication will be applied ONLY to the final version, NOT to the 60-second practice time.

REGION VOCAL SOLO LIST

Region vocal auditions will include the required solo, scales, and sight-reading (with the exception of the students performing for comments only). All selections are from the Medium High (Soprano and Tenor) and Medium Low (Alto and Bass) editions of Twenty-Four Italian Songs and Arias, published by G. Schirmer/Hal Leonard. The G. Schirmer accompaniment CD must be used in all adjudication rooms and will be provided by the adjudicator. Solos must be performed in the language and key in which the title is printed, unless otherwise noted.

SOPRANO

2017-2018 *Sebben, crudele*
 2018-2019 *Se tu m'ami*
 2019-2020 *Danza, danza*
 2020-2021 *Per la Gloria d'adorarvi*

ALTO

2017-2018 *Alma del core*
 2018-2019 *O del mio dolce*
 2019-2020 *Nina*
 2020-2021 *Se tu m'ami*

TENOR

2017-2018 *Danza, danza*
 2018-2019 *Per la gloria*
 2019-2020 *Amarilli, mia bella*
 2020-2021 *Gia il sole dal Gange*

BASS

2017-2018 *Nina*
 2018-2019 *Sebben, crudele*
 2019-2020 *Tu lo sai*
 2020-2021 *Vittoria, mio core*

ALL-STATE VOCAL AUDITIONS

Students selected for the all-state audition on voice will prepare their part from a prescribed selection chosen from the coming year's All-State concert repertoire in a Music Minus One format (MM1). Four versions (each version missing one voice part) will be available through the CMEA website. This will be the official MM1 used for the auditions.

2017-2018	<i>How Lovely Are the Messengers</i>	Mendelssohn, ed. Neuen	Alfred
2018-2019	<i>My Spirit Sang All Day</i>	Finzi	Boosey & Hawkes
2019-2020	<i>Gloria from Harmoniemesse</i>	Haydn, ed. Liebergen	Alfred Music
2020-2021	<i>Domini filii unigenite from Gloria</i>	Vivaldi	Alfred