

NORTHERN REGION MIDDLE SCHOOL FESTIVAL 2017-2018 VOCAL REQUIREMENTS

Read carefully, some items may have changed

Each student auditioning will be required to:

1. Sing a solo selection a cappella. The selections are as follows:
 - **sopranos** (girls or boys) - an arrangement of Handel's Sing for Joy in the key of C.
 - **altos** (girls or boys) - the same arrangement of Handel's Sing for Joy in the key of G.
 - **tenors** (boys) - the same arrangement of Sing for Joy in the key of D, *or any other comfortable key*. The piece has been arranged using both the tenor and the bass clef - boys may sing from either one.
 - **baritones** (boys) - the same arrangement of Sing for Joy in the key of G. The baritone pieces have been written in the bass clef. Baritones **MAY NOT** change keys. Sing as written.

PLEASE NOTE:

- ✓ If your **male singer** is auditioning as a soprano or alto, he must perform the Handel piece in the assigned key for that vocal part so that he can demonstrate a full soprano/alto range.
- ✓ For **tenor** singers auditioning in a key different from the arrangement, please be sure to instruct your students to announce to the judges which key they will be singing in so that they receive the correct starting pitch.
- ✓ **Baritones SING AT THE PITCH INDICATED IN THE SOLO.** They may not change keys.

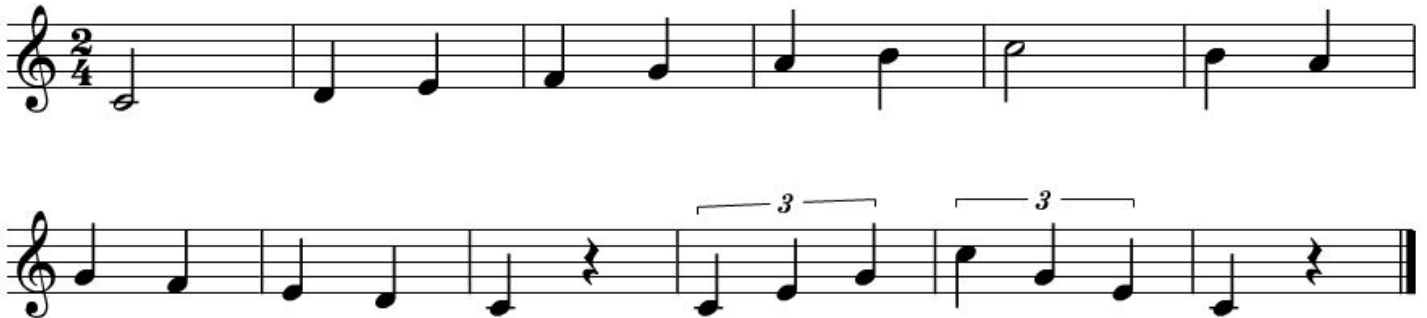
A copy of each solo selection will be made available **on the web site and should be downloaded and copied for your students.** We chose pieces in the public domain and arranged them ourselves so this would be permissible. Your students must sing these exact arrangements of the pieces.

2. Sing a scale. **PLEASE READ THE FOLLOWING SECTION CAREFULLY** so your students are properly prepared in order to be successful at their audition. Starting pitches* for the required scale are notated below for each voice part. Quarter note = 92.

Soprano E Alto C Tenor G (suggested) Bass C



This scale is to be sung once from memory using either solfeggio or a neutral syllable. Please be sure to *adhere strictly* to the rhythm of the scale, as this will be exactly what the judges will be listening for.



*TENORS should sing the scale in whichever key is most comfortable and suited to their vocal range. Sopranos, Altos and Baritones should sing the scale in the key stated above.

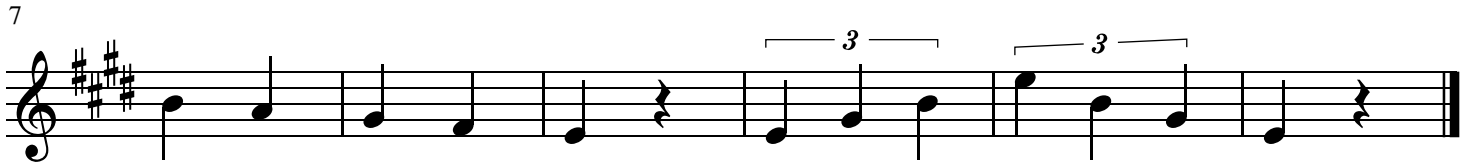
3. Sight-sing a four-measure passage of music in 4/4 time in C, D, F, or G major, beginning on "do." Students may sing the passage using solfeggio or a neutral syllable of their choice. The first two measures will be entirely stepwise motion, the last two will contain skips between do, mi, and sol.

*****THE ORDER OF AUDITION IS SIGHTSINGING, SCALE, SOLO*****

Each school may bring an unlimited number of sopranos and altos to the audition as well as an unlimited number of tenors or baritones to the audition. Please encourage your strong male singers with changed or changing voices to audition. The number of tenors and baritones who are accepted may affect the number of treble voices that can be accepted, as the choir must be balanced.

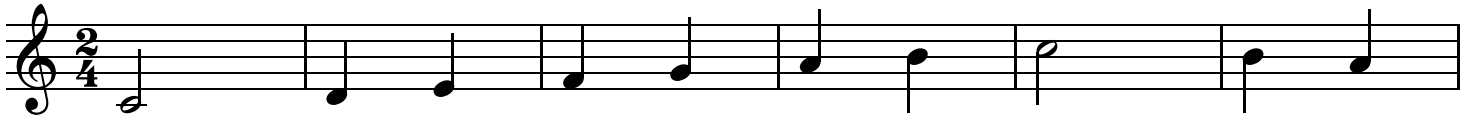
Soprano Scale Key of E

♩=92



Alto Scale Key of C

♩=92

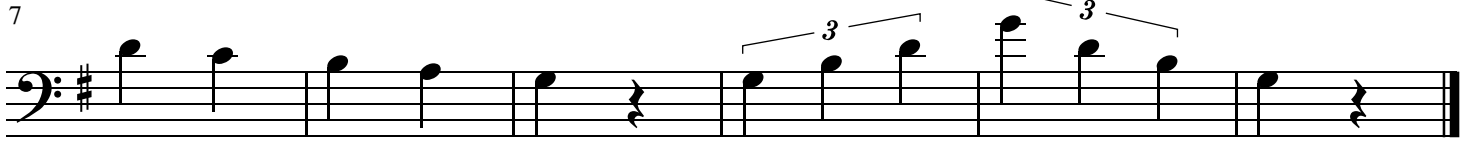
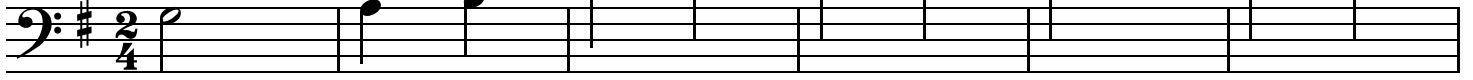


7



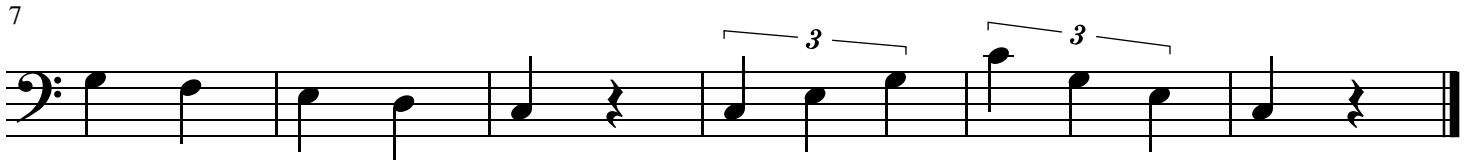
Tenor Scale Key of G

♩=92



Bass Scale Key of C

♩=92



Sing For Joy Soprano

Soprano

Handel

♩ = 100

Soprano

Sing for joy! Sing out in a joy ful song. Sing out in a joy ful song. Sing

4

joy and praise for - ev - er more. Sing joy

7

and praise for ev - er more. Joy! Joy! Joy! Sing for joy!

11

Sing a joy ful song. sing joy and praise for - ev - er more!

Sing For Joy

Alto

Handel

♩=100

Alto *f*

Sing for joy! Sing out in a joy ful song. Sing out in a joy ful song. Sing

4

joy _____ and praise _____ for - ev - er more. Sing joy _____

7

_____ and praise _____ for ev - er more. Joy! Joy! Joy! Sing for joy!

11

Sing a _____ joy ful song. sing joy _____ and praise for - ev er more!

Sing For Joy Tenor

Vocal Tenor Clef

Handel

$\text{♩} = 100$

f

Tenor

Sing for joy! Sing out in a joy ful song. Sing out in a joy ful song. Sing

4

p

joy _____ and praise _____ for - ev - er more. Sing joy _____

7

_____ and praise _____ for ev - er more. Joy! Joy! Joy! Sing for joy!

11

mp *f* rit. . .

Sing a _ joy ful song. sing joy _____ and praise for - ev er more!

Sing For Joy Tenor

Bass Clef

Handel

♩ = 100

Tenor

Sing for joy! Sing out in a joy ful song. Sing out in a joy ful song. Sing

4

joy _____ and praise _____ for - ev - er more. Sing joy _____

7

— and praise _____ for ev - er more. Joy! Joy! Joy! Sing for joy!

11

Sing a __ joy ful song. sing joy _____ and praise for - ev er more!

