

NORTHERN REGION MIDDLE SCHOOL FESTIVAL

Audition Solo List –2017/2018, 2019/2020 School Years

Winds and Percussion

A NOTE ON METRONOME MARKINGS AND “SMARTMUSIC”

SmartMusic is a computer program that allows a musician to play solos with accompaniment. All woodwind and brass solos on the Northern Region Middle School audition list have an accompaniment in SmartMusic.

Practicing a solo with accompaniment gives a musician a more complete understanding of the music, as this allows you to hear the entire song the way the composer intended. There are a few things you should know about the use of SmartMusic to help you prepare for your audition:

1. The use of SmartMusic is NOT required to audition.
2. You will NOT be using SmartMusic during your actual audition.

If you are interested in using SmartMusic in preparation for your audition, you or your school must purchase it from www.smartmusic.com. SmartMusic is available on both a monthly and yearly subscription basis.

***Metronome markings have been placed next to each solo on this list, indicating the starting tempo at which they should be performed.** These markings come from the musicians at SmartMusic (www.smartmusic.com), who have used historical and common performance practice data, as well as information from the music publishers, to determine the ideal tempo for each solo. Multiple markings of tempo (e.g. 145,100) are given for each new tempo marking in the piece of music. For example, 145, 100 indicates a beginning tempo of 145 bpm and a tempo change to 100 bpm.

Oboe

Easy –Ariette from Panurge (only up to measure 41) – Concert and Contest Collection – Rubank (120)
Medium – Menuetto and Presto from Trio V (Menuetto only) - Concert and Contest Collection – Rubank (138)
Difficult – Gavotta - Concert and Contest Collection – Rubank (144)

Bassoon – *Classic Festival Solos Vol. 2 is not in SmartMusic yet – coming soon!*

Easy - The Happy Hunter - Classic Festival Solos Vol. 2
Medium – Minuetto - Classic Festival Solos Vol. 2
Difficult - Pouppee Valsante – Classic Festival Solos Vol. 2

Flute

Easy – Spirit Dance from The Opera “Orpheus” - Rubank Book of Flute Solos – Easy Level (69)
Medium – Gavotte from “Don Juan” – Rubank Book of Flute Solos –Easy Level (138)
Difficult – Canzona – Rubank Book of Flute Solos – Intermediate Level (100)

Piccolo

Slumber Song (Schlummerlied, Op 124, No 16) – Rubank Book of Flute Solos – Intermediate Level (57)

Clarinet

Easy – Spirit Dance from Orpheus – Rubank Book of Clarinet Solos - Easy Level (69)

Medium – Fantasy-Piece (only up to page 2, line 2, measure 1) – Concert and Contest Collection – Rubank (80)

Difficult – Stamitz Concerto No. 3- Peters Edition – Movement 3, up to mm 83 (92)

Bass Clarinet

Easy - Sarabande and Bourree (from “Lively”-end) - Concert and Contest Collection – Rubank (126)

Medium - Romance and Troika (only Allegro) - Concert and Contest Collection – Rubank (128)

Difficult - Minuet and Gigue - Concert and Contest Collection – Rubank (104, 108)

Alto and Baritone Saxophone

Easy – Canzonetta and Giga (Canzonetta Only) – Concert and Contest Collection – Rubank (60)

Medium – Minuet from Haffner Music, K. 250 - Concert and Contest Collection – Rubank (144)

Difficult – Sonatina based on Trio V - Concert and Contest Collection – Rubank (88)

Tenor Saxophone

Easy – Contradance – Concert and Contest Collection – Rubank (85, 142)

Medium – Adagio and Allegro from Sonata No. 6 (Adagio only) - Concert and Contest Collection – Rubank (69)

Difficult – Adagio and Allegro from Sonata No. 6 (Allegro only) - Concert and Contest Collection – Rubank (104)

Trumpet/Euphonium T.C.

Easy – Meadowlark – Rubank Book of Trumpet Solos - Easy Level (88, Andante Mod – 88, Trio – 84, Coda – 96)

Medium – La Casa – Classic Festival Solos Vol. 2 (Andante – 84, Valse – 168, Allegretto – 104)

Difficult – Bonita Valse Brillante (no coda) - Rubank Book of Trumpet Solos – Intermediate Level
(Allegro Moderato – 126, Waltz – 168, Allegro – 184)

Horn

Easy – Menuet – K. 164 – Classic Festival Solos – Vol.1 (104)

Medium – Romance – Concert and Contest Collection – Rubank

(Moderato – 90, A little more animated – 102, A tempo – 90)

Difficult – Romanza and Rondo from Concerto No. 4, K. 495 – (Andante only) – Concert and Contest Collection – Rubank (63)

Trombone/Euphonium B.C.

Easy – Outdoor Aire – Classic Festival Solos Vol. 1 (108)

Medium – Did Your Mother Come From Ireland? – Classic Festival Solos Vol. 1 (92)

Difficult – Two Spanish Dances #1 – Concert and Contest Collection – Rubank (72)

Tuba

Easy – Aurora - Classic Festival Solos Vol. 1 (122)

Medium – The Elephant Dance – Classic Festival Solos Vol. 1 (100)

Difficult – Bordogni Medley – Classic Festival Solos Vol. 1 (78, B – 86, C – 78, D – 90, Allegro Molto – 110)

Snare Drum – *there are no snare drum accompaniments in SmartMusic*

Easy – Solo #1 - Alfred’s Drum Method, Book 2 (120)

Medium – Page 26 – Musical Studies for the Intermediate Snare Drummer – Garwood Whaley (96-108)

Difficult – Page 28 – Musical Studies for the Intermediate Snare Drummer – Garwood Whaley (72-86)

Mallets – *there are no mallet accompaniments in SmartMusic*

Easy – Irish Washer Woman, page 33 - Modern School for Xylophone, Marimba, Vibes - Goldenberg (112)

Medium – Magic Flute, page 102 - Modern School for Xylophone, Marimba, Vibes – Goldenberg (half=80)

Difficult – page 28 - Modern School for Xylophone, Marimba, Vibes – Goldenberg (132)

Timpani – *there are no timpani accompaniments in SmartMusic*

Easy – page 4 – Musical Studies for the Intermediate Timpanist – Garwood Whaley (72-84)

Medium – page 51, #2 - The Complete Timpani Method – Friese & Lepak (120)

Difficult – page 53, #6 - The Complete Timpani Method – Friese & Lepak (half=56)

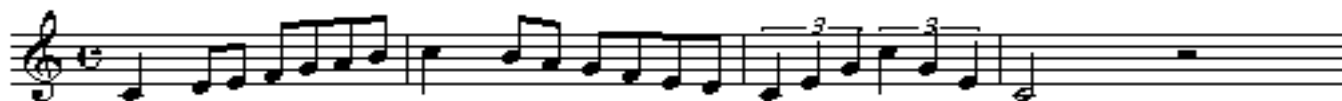
NORTHERN REGION MIDDLE SCHOOL SCALES

Woodwinds, Brass and Mallets:

Students must prepare all major scales listed below by memory, plus the chromatic scale by memory. Please note that all major scales are listed with that instrument's starting pitch – they are not listed in Concert Pitch!

Use the following scale pattern for all major scales/arpeggios. Tempo: Quarter Note=80 bpm or faster.

One Octave:



Two Octaves:



Flute/Piccolo – Eb – 2 octaves; Bb – 1 octave; F – 2 octaves; C – 1 octave; G – 1 octave
Oboe – Eb – 1 octave; Bb – 1 octave; F – 1 octave; C – 2 octaves; G – 1 octave
Bassoon – Eb – 1 octave; Bb – 1 octave; F – 1 octave; C – 1 octave; G – 1 octave
Clarinet – F – 2 octaves; C – 2 octaves; G – 2 octaves; D – 1 octave; A – 2 octaves
Bass Clarinet – F – 2 octaves; C – 1 octave; G – 1 octave; D – 1 octave; A – 1 octave
Saxophones – C – 2 octaves; G – 1 octave; D – 2 octaves; A – 1 octave; E – 1 octave
Trumpet/Euphonium T.C. – F – 1 octave; C – 1 octave; G – 2 octaves; D – 1 octave; A – 1 octave
French Horn – Bb – 1 octave; F – 1 octave; C – 1 octave; G – 1 octave; D – 1 octave
Trombone/Euphonium B.C. – Eb – 1 octave; Bb – 1 octave; F – 1 octave; C – 1 octave; G – 1 octave
Tuba – Eb – 1 octave; Bb – 1 octave; F – 1 octave; C – 1 octave; G – 1 octave
Mallets – Eb – 1 octave; Bb – 1 octave; F – 1 octave; C – 1 octave; G – 1 octave

Use the following scale pattern for the one octave concert Bb chromatic scale. Tempo: Quarter Note=60 bpm or faster. French Horns can start on C rather than F if you choose.



Note: A short sight-reading excerpt will also be part of all winds and percussion auditions

Percussion:

All percussionists auditioning on snare drum are required to prepare the auxiliary percussion example listed below, as well as prepare the NRMS Rudiment Requirements found on the next page. All percussion instruments will be provided for you at the audition, however you are welcome to bring your own instruments to the audition. No drum sticks, suspended cymbal mallets, or triangle beaters will be provided at the audition – please bring your own.

All percussionists auditioning on mallets and/or timpani are also required to prepare the auxiliary percussion example listed below, but not the NRMS Rudiment Requirements.

Percussion

Aux Percussion NRMS Excerpt

D. Volpe

Moderato ♩ = 106

1 Suspended Cymbal *fp* *ff* ch. To Tamb.

4 Tambourine *p* To Tri.

7 Triangle *mp* To C. Cym

12 *mp* *mf* *f* ch.

NRMS Rudiment Requirements

Long Roll (Open, Metered, Double Stroke)

♩=110

Musical notation for Long Roll (Open, Metered, Double Stroke) in 4/4 time. The notation shows a series of four half notes, each with a double stroke, connected by a slur. The notes are on the G line of the treble clef.

Closed, Pressed, Buzzed)

♩=110

Musical notation for Closed, Pressed, Buzzed Long Roll in 4/4 time. The notation shows a series of four half notes, each with a double stroke, connected by a slur. The notes are on the G line of the treble clef.

Paradiddle

♩=110

Musical notation for Paradiddle in 4/4 time. The notation shows a series of eighth notes, each with an accent (>), connected by a slur. The notes are on the G line of the treble clef. The sequence of strokes is R L R R L R L L R L R R L R L L R L R R L R L L R L R L L R.

Five Stroke Roll (Open/Metered)

♩=110

Musical notation for Five Stroke Roll (Open/Metered) in 4/4 time. The notation shows a series of five eighth notes, each with an accent (>), connected by a slur. The notes are on the G line of the treble clef. The sequence of strokes is L L R R L L.

(Closed, Pressed, Buzzed)

Nine Stroke Roll (Open/Metered)

♩=110

Musical notation for Nine Stroke Roll (Open/Metered) in 4/4 time. The notation shows a series of nine eighth notes, each with an accent (>), connected by a slur. The notes are on the G line of the treble clef. The sequence of strokes is R R L L R R L L.

(Closed, Pressed, Buzzed)

Seventeen Stroke Roll (Open/Metered)

♩=110

Musical notation for Seventeen Stroke Roll (Open/Metered) in 4/4 time. The notation shows a series of seventeen eighth notes, each with an accent (>), connected by a slur. The notes are on the G line of the treble clef. The sequence of strokes is R R L L R R L L R R L L R R L L.

(Closed, Pressed, Buzzed)

Flam

♩=110

Musical notation for Flam in 4/4 time. The notation shows a series of eighth notes, each with an accent (>), connected by a slur. The notes are on the G line of the treble clef. The sequence of strokes is IR rL IR rL IR rL IR rL IR rL.

Flam Tap

♩=110

Musical notation for Flam Tap in 4/4 time. The notation shows a series of eighth notes, each with an accent (>), connected by a slur. The notes are on the G line of the treble clef. The sequence of strokes is IR R rL L IR rL L IR R rL.

Flam Accent

♩ = 110 b.p.m.

Musical notation for Flam Accent in 6/8 time. The notation shows a series of eighth notes, each with an accent (>), connected by a slur. The notes are on the G line of the treble clef. The sequence of strokes is IR L R rL R L IR rL R L IR L R rL.