

# DRUM SET

# WESTERN REGION MS JAZZ ETUDE 2014 (SCERBOLOGY)

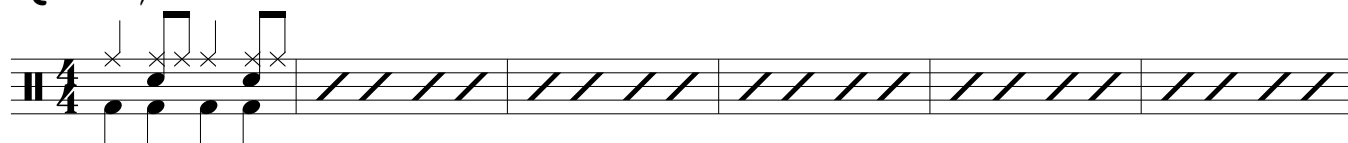
(PERFORM THIS ENTIRE 12-BAR BLUES ETUDE IN THE THREE STYLES INDICATED)

SCERBO / WINTERS

**Performance Directions:** Play this entire 12-bar blues etude (all four choruses) in the following three styles: **Swing**, **Latin**, and **Funk**. Use the suggested rhythmic patterns to establish an appropriate "time" and "feel" for all three styles. Feel free to embellish (when appropriate). Setup the rhythmic ensemble "hits" during the 2nd chorus and take a 12-bar rhythmic solo (in time) on the repeat (3rd chorus). Complete the etude by returning to your originally established "time" feel on the last (4th) chorus. All fills and embellishments must be stylistically appropriate and in "time."

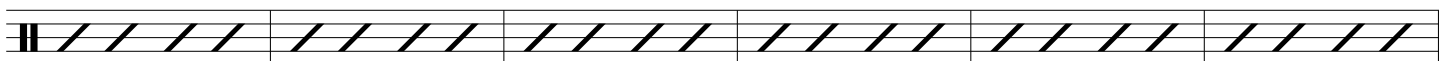
## SWING / LATIN / FUNK

(PLAY TIME)

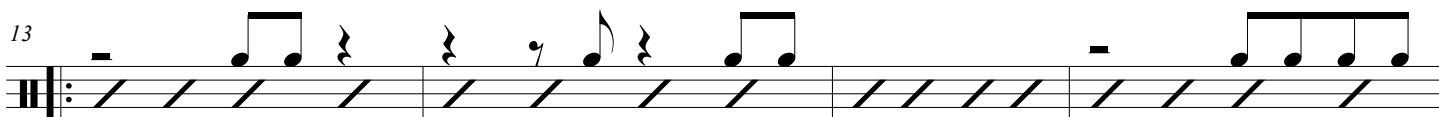


7

FILL....



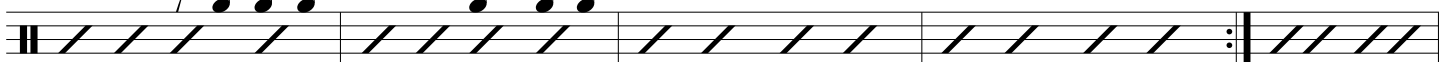
(PLAY HITS 1ST TIME ONLY / 2ND TIME SOLO)



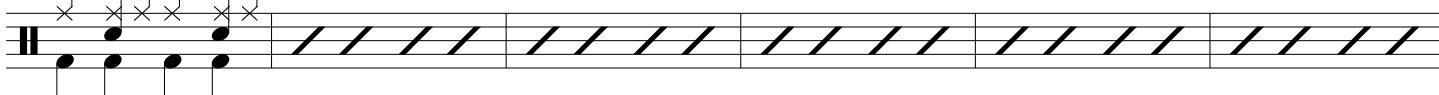
17



21



26



32

FILL....

