

# **CMEA High School Audition Repertoire**

## **Vocal**

### **4-Year Rotation (May, 2020)**

In order to ensure consistent and fair adjudication, all students must use the same edition of a given solo. Students must use the required edition of the books/pieces indicated. The publishers/distributors are listed to help you locate a given etude book or piece.

CMEA expects all students participating in the audition process to abide by all copyright laws. Students must have an original piece of music, a digitally purchased copy w/receipt, a public domain copy, or perform from memory. With the exception of students performing from memory, students auditioning without an acceptable copy of music may be disqualified from festival participation.

Students may audition in as many areas as they choose; however, vocal students may audition on one voice part only – Soprano, Alto, Tenor, or Bass. Directors must submit their student's ensemble preference during registration; however, **the final decision for ensemble placement rests with the appropriate festival committees.**

### **CMEA Policies Regarding Students With A Disability**

It is the responsibility of the child's music director to notify the Region Director of any modifications required for students who may have an Individualized Education Program (IEP) or 504 plan in anticipation of the CMEA sponsored Adjudication or Festival processes. Any request for modifications must be made 30 days prior to the said CMEA sponsored event. It is also the responsibility of the child's school district to fund any costs incurred by such modifications.

Special thanks to Jay Stevens at Foundry Music in New Haven, CT for verifying this repertoire information and availability.

# VOCAL REQUIREMENTS

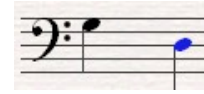
## SCALES

Starting pitches for the required scales are notated below for each voice part.

Soprano – G and D



Tenor – G and D



Alto – D and G



Bass – D and G



Scales will be sung from memory in the following pattern, using either solfeggio or on a neutral syllable:

M.M. quarter note  
= 92



## SIGHT-READING PROCEDURES

This document is designed to assist teachers in preparing students for the sight-reading component of the regional/state adjudication, and to support a systematic approach to developing literacy skills. The sight-reading portion of student adjudication is intended as validation for daily sight-reading preparation in classrooms across the state.

- All singers will read the same eight measure melody. The melody will be situated in landscape mode on the page using one system with the same melody in both bass and treble clefs. All Regional examples (major keys only) in D.
- All-State examples will have two separate systems with two different keys (one for soprano/tenor, and one for alto/bass). The soprano/tenor system will include the example written in both bass and treble clefs, and the alto/bass system will include the examples written in both bass and treble clefs. All-State examples (major keys only) sopranos, tenors - D, Eb, or F; altos, basses - Bb, C, or D.
- The example will always start on Do. All Regional examples will end on Do. All-State examples may or may not end on Do. All Regional examples can include notes from low Ti to high Re; All-State examples can include low Sol to high Re.
- Intervals: All Regional examples can include thirds (all ascending and descending), fourths (sol-do), and fifths (do-sol, sol-do) All-State examples can include thirds (all ascending and descending), all fourths, all fifths, and octave leaps (do-do, re-high re, low sol-sol, low la-la, low ti-ti).
- Singers may choose to sing solfège syllables, numbers, or any neutral syllable.

- The example will be in 4/4 time and will be eight measures in length.
- Both Region and All-State may utilize 1/2 notes (and rests), 1/4 notes (and rests), 1/8 notes (by themselves or beamed together), dotted quarter notes, and dotted half notes.
- Students must stay within 60-90 BPM (quarter note) to receive full credit.
- Students will have 60 seconds to practice, and are encouraged to sing out loud during their practice time.

## **REGION VOCAL SOLO LIST**

Region vocal auditions will include the required solo, scales, and sight-reading (with the exception of the students performing for comments only). All selections are from the Medium High (Soprano and Tenor) and Medium Low (Alto and Bass) editions of Twenty-Four Italian Songs and Arias, published by G. Schirmer/Hal Leonard. The G. Schirmer accompaniment CD must be used in all adjudication rooms and will be provided by the adjudicator. Solos must be performed in the language and key in which the title is printed, unless otherwise noted.

### **2020-2021**

SOPRANO/TENOR *Gia il sole dal Gange* (medium high)

ALTO/BASS *Tu lo sai* (medium low)

### **2021-2022**

SOPRANO/TENOR *Sebben, crudele* (medium high)

ALTO/BASS *Caro mia ben* (medium low)

### **2022-2023**

SOPRANO/TENOR *Tu lo sai* (medium high)

ALTO/BASS *Gia il sole dal Gange* (medium low)

### **2023-2024**

SOPRANO/TENOR *Caro mio ben* (medium high)

ALTO/BASS *Sebben, crudele* (medium low)

**Note** – the book Twenty-Four Italian Songs and Arias, published by G. Schirmer/Hal Leonard, is NOT public domain. Some songs within the book MAY be. However, CMEA makes no claim whether songs are public domain or not.

## **ALL-STATE VOCAL AUDITIONS**

Students selected for the all-state audition on voice will prepare their part from a prescribed selection chosen from the coming year's All-State concert repertoire in a Music Minus One format (MM1). Four versions (each version missing one voice part) will be available through the CMEA website. This will be the official MM1 used for the auditions.

2020-2021	<i>Domine fili unigenite</i> from Gloria	Vivaldi, arr. Liebergen	Alfred
2021-2022	<i>How Lovely Are The Messengers</i>	Mendelssohn, ed. Neuen	Alfred
2022-2023	<i>My Spirit Sang All Day</i>	Finzi	B&H/Hal Leonard
2023-2024	<i>Gloria from Harmoniemesse</i>	Haydn, ed. Liebergen	Alfred