



January 2021

Hello CT Music Educators!

Greetings from the Student Affairs Commission! I hope this letter finds you all somewhat rested and recharged after the break. This contains information pertaining to the All State auditions coming up in February.

- Registration of students MUST be completed by FEBRUARY 10, 2021 and video uploads MUST be completed by FEBRUARY 20, 2021. Directors, please watch your students' videos (I know it's not easy if you have many who are submitting) to be sure there is nothing missing. We had many videos that were cut off, missing scales, etc. NO late submissions will be accepted under any circumstance.
- IN THE VIDEO, there must be a visible clock in the frame. Edited videos are not allowed. The camera should be pointed at the student, without obstructions (like a music stand) so the judges can see and hear the performance as clearly as possible. Please remind your instrumental students that hands should be visible throughout the audition (bowings, stickings, etc)
- Please have your student(s) say their first and last name ONLY at the beginning of the video. Please do NOT have them say which school they are from.

### Audition specifics

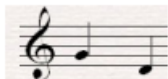
- **Voice:** Prepared Piece will be performed WITH the MMO accompaniment THEN scales. **There is no sight reading for this year.**
- **Winds:** Major Scale+Arpeggio, Chromatic Scale, THEN prepared piece. **There is no sight reading this year for strings, winds, or percussion**
- **Jazz:**
  - **Winds:** Etude, THEN improvisation WITH recorded accompaniment. **There is no sight reading for this year.**
  - **Rhythm Section** (vibes/guitar/piano/bass): Etudes, THEN improvisation WITH recorded accompaniment. Rhythm section, please be sure to check requirements on the CMEA website
    - **Drums:** Etude AS WRITTEN, THEN improvisation, THEN supplemental requirement (performed IN ORDER as found on the CMEA website)

## All State Scale Requirements

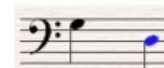
### **VOCAL REQUIREMENTS** **SCALES**

Starting pitches for the required scales are notated below for each voice part.

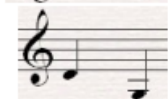
Soprano – G and D



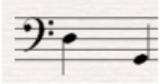
Tenor – G and D



Alto – D and G



Bass – D and G



Scales will be sung from memory in the following pattern, using either solfeggio or on a neutral syllable:

M.M. quarter note  
= 92



**Strings:** Please note all minor scales are MELODIC minor. Perform Scales, THEN solo, THEN excerpt  
**Students should play the entire assigned portion of the solo repertoire followed by the assigned orchestral excerpts from Beethoven 5.**

Violin - A Major and a minor (3 octaves + Arpeggio)

Viola - D Major and d minor (3 octaves + Arpeggio)

Cello - D Major and d minor (3 octaves + Arpeggio)

Bass - A Major and a minor (2 octaves + Arpeggio)

Harp - E Major (3 octaves + Arpeggio, as outlined on the CMEA website)

*Please visit the CMEA Website for scale patterns*

**Winds:** Major Scale+Arpeggio, followed by Chromatic Scale, THEN solo

Piccolo - Gb Major (2 octaves+Arpeggio), Chromatic (D-Ab, 2+ octaves)

Flute - Db Major (2 octaves+Arpeggio), Chromatic (C-C, 3 octaves)

Oboe - Cb/B Major (1 octave+Arpeggio), Chromatic (C-C, 2 octaves)

Bassoon - E Major (2 octaves+Arpeggio), Chromatic (F-F, 2 octaves)

Bb Clarinet - E Major (3 octaves+Arpeggio), Chromatic (E-G, 3+ octaves)  
Bb Bass Clarinet - Ab Major (2 octaves+Arpeggio), Chromatic (E-Bb, 2+ octaves)  
Alto Saxophone - E Major (2 octaves+Arpeggio), Chromatic (B-F, 2+ octaves)  
Tenor Saxophone - Gb Major (1 octave+Arpeggio), Chromatic (B-F, 2+ octaves)  
  
Baritone Saxophone - E Major (2 octaves+Arpeggio), Chromatic (B-F, 2+ octaves)  
Trumpet - Ab Major (2 octaves+Arpeggio), Chromatic (C-C, 2 octaves)  
F Horn - Db Major (2 octaves+Arpeggio), Chromatic (G-G, 2 octaves)  
Trombone - A Major (2 octaves+Arpeggio), Chromatic (Bb-Bb, 2 octaves)  
Bass Trombone - A Major (2 octaves+Arpeggio), Chromatic (G-G, 2 octaves)  
Euphonium - A Major (2 octaves+Arpeggio), Chromatic (F-Bb, 2+ octaves)  
Tuba - Gb Major (2 octaves+Arpeggio), Chromatic (Bb-Bb, 2 octaves)

*Please visit the CMEA Website for scale patterns*

## **Percussion:**

**Mallets** - Scale+Arpeggio, THEN solo  
E Major (2 octaves + Arpeggio), Chromatic (C-C 2 octaves)

*Please visit the CMEA Website for scale patterns*

**Snare and Accessories** - Rudiments, THEN solo, THEN accessories  
Rudiments:

- Rolls. 13 Stroke
- Flam Accents
- Single Ratamacue

**Timpani** – Solo, then tunings  
Tunings: m3, P4 and M6 from A

We sincerely hope that your students take advantage of this opportunity, and will find it rewarding. Stay strong, stay safe, and I hope to see you all in person whenever possible! **Teachers: please be aware that it is your responsibility to “proof” your students’ videos once the upload has been completed. If necessary, you can delete it and re-upload the video. We had some instances of videos being cut off or uploaded to the incorrect student account.** If you have questions, please feel free to contact me at [student-affairs@cmea.org](mailto:student-affairs@cmea.org). Be well!

John Abucewicz  
Student Affairs Commission Chair