



October 2021

HS REGIONAL INFORMATION 2021

Hello CT Music Educators!

Greetings from the Student Affairs Commission! I hope this letter finds you well, and hopefully able to navigate your way through the start of the year. As promised, here is another update pertaining to the high school regional auditions. Please read ALL of this carefully, as there is a lot of information.

In this letter, you will find all of the required excerpts (for those with longer solos) as well as scale/rudiment requirements for high school regional auditions.

- Please keep in mind:
 - NR and SR Registration MUST be completed by OCTOBER 29, 2021 and video uploads MUST be completed by NOVEMBER 6, 2021.
 - ER and WR Registration MUST be completed by NOVEMBER 5, 2021 and video uploads MUST be completed by NOVEMBER 13, 2021.

NO late submissions will be accepted under any circumstance. If a clock is not visible or the video appears to be edited, then the student will receive comments ONLY (no score), and be disqualified from being accepted into any ensemble.

- IN THE VIDEO, there must be a visible clock in the frame. Edited videos are not allowed. The camera should be pointed at the student, without obstructions (like a music stand) so the judges can see and hear the performance as clearly as possible. Percussion students must have hands visible in the frame.
- Jazz and Vocalists should perform with accompaniment. Vocalists have the choice to perform with or without accompaniment.
- Winds should perform WITHOUT any accompaniment. If there is an accompaniment in the video, the video will receive comments only, but be disqualified from being accepted into any ensemble.
- Please have your student(s) say their first and last name ONLY at the beginning of the video. Please do NOT have them say which school they are from.
- Videos should be ONE TAKE. Please do not have students stop the video after they perform each part of the audition. For example, wind players should perform their Major scale, chromatic scale, and prepared piece ONE AFTER ANOTHER without stopping the video.

Lastly, the following is the way in which videos SHOULD be recorded:

- **Voice:** Prepared Piece THEN scales (**NO sight reading for this year**). SOLO CAN BE PERFORMED WITH OR WITHOUT RECORDED ACCOMPANIMENT.
 - SOPRANO/TENOR Sebben, crudele (medium high)
 - ALTO/BASS Caro mio ben (medium low)
- **Strings:** Major Scale, THEN minor scale (melodic minor ONLY), THEN prepared excerpt/piece. **There is no sight reading this year.**
- **Winds/Mallets:** Major Scale, Chromatic Scale, prepared piece(s). For those winds with multiple audition pieces, please record them as follows:
 - Piccolo: Andantino p. 2 #2 (m. 28, beat 2; middle of line 6 to end) THEN Allegro (m. 27, beat 2 end of line 5 – starts on low D, to end)
 - Flute: Allegretto Vivo, p. 22 #4 (m. 33, middle of line 6, to end) THEN Largo Cantabile (beginning to m. 36 beat 1)
 - Oboe: Etude #6 THEN Etude #9 (ALL)
 - Bassoon: #4 THEN #8 (ALL)
 - Clarinet: Etude #13 (last 4 lines, starting with anacrusis on low A) THEN #26 (beginning to m. 20 middle of line 7)
 - Bass Clarinet: Etude #7, ALL
 - Saxophone: #19 (ALL) THEN #22 (ALL)
 - Trumpet: Melodious Etude #6 (m. 1-25) THEN Vizzutti Rhythmic Etude #4 (ALL)
 - Horn: #67 (ALL) THEN #65 (ALL)
 - Trombone: Etude #4 (ALL)
 - Euphonium: Etude #11 (ALL)
 - Bass Trombone: Bordogni #10 (ALL)
 - Tuba: Bordogni #8 (ALL)
 - Snare and Accessories: Snare Rudiments, THEN Etude #18 (ALL), THEN accessories as listed on the CMEA website (Tambourine, Crash Cymbals, Bass Drum)

- Timpani: Metro Line Seven (ALL), THEN Tuning (see below in scales section)
- Mallets: Sonata (ALL, no repeat)
- **There is no sight reading this year**

- **Jazz:**
 - **Winds:** Etude without accompaniment, THEN improvisation WITH recorded accompaniment
 - **Rhythm Section** (vibes/guitar/piano/bass): Etudes, THEN improvisation WITH recorded accompaniment. Rhythm section, please be sure to check requirements on the CMEA website
 - **Drums:** Etude AS WRITTEN, THEN improvisation, THEN supplemental requirement (performed IN ORDER as found on the CMEA website)

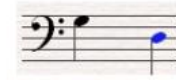
Regional Scale Requirements

Vocal:

Soprano – G and D



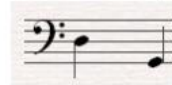
Tenor – G and D



Alto – D and G



Bass – D and G



Please visit the CMEA Website for scale pattern

Strings: Please note all minor scales are MELODIC minor. Please record scales THEN solo.

Violin - C Major and c minor (3 octaves) - Solo: Beginning through the Fortissimo in the last "Piu Mosso" section (end after the harmonics).

Viola - F Major and f minor (3 octaves) - Solo: Entire solo, both movements, no repeats.

Cello - F Major and f minor (3 octaves) - Solo: Entire solo, no repeats

Bass – E Major and e minor (2 octaves) - Solo: 1st movement- Beginning until first repeat. 2nd movement, whole thing, no repeats.

Harp – C Major and c minor (3 octaves, as outlined on the CMEA website), Etude #8 (ALL)

Please visit the CMEA Website for scale patterns

Winds:

Piccolo - Eb Major (2 octaves), Chromatic (F-F, 2 octaves)

Flute - F Major (2 octaves), Chromatic (A-A, 2 octaves)

Oboe - D Major (2 octaves), Chromatic (C-C, 2 octaves)

Bassoon - G Major (2 octaves), Chromatic (F-F, 2 octaves)

Bb Clarinet - G Major (3 octaves), Chromatic (E-G, 3+ octaves)

Bb Bass Clarinet - F Major (2 octaves), Chromatic (C-C, 2 octaves)

Alto Saxophone - F Major (2 octaves), Chromatic (B-F, 2+ octaves)

Tenor Saxophone - Bb Major (2 octaves), Chromatic (B-F, 2+ octaves)

Baritone Saxophone - F Major (2 octaves), Chromatic (B-F, 2+ octaves)

Trumpet - G Major (2 octaves), Chromatic (C-C, 2 octaves)

F Horn - Eb Major (2 octaves), Chromatic (G-G, 2 octaves)

Trombone - G Major (2 octaves), Chromatic (Bb-Bb, 2 octaves)

Bass Trombone - G Major (2 octaves), Chromatic (G-G, 2 octaves)

Euphonium - G Major (2 octaves), Chromatic (Bb-Bb, 2 octaves)

Tuba - Ab Major (2 octaves), Chromatic (Bb-Bb, 2 octaves)

Mallets - A Major (2 octaves), Chromatic, C-C (2 octaves)

Snare Drum:

Rolls: 9 stroke rolls (3 times Open and 3 times Closed)

Flams: Flam Accents

Drags: Single Ratamacue

Timpani:

- You will need a device to play an “A”. Tune the “A” on the 29” drum
- Then tune a P4 above the “A” on the 26” drum (D)
- With the 26” drum at “D”, tune a P5 BELOW “D” on the 29” drum, so the 29” becomes a “G”

Please visit the CMEA Website for scale pattern

We sincerely hope that your students take advantage of this opportunity, and will find it rewarding. We are planning on in-person festivals, and in-person All State auditions and festival. Stay strong, stay safe, and I hope to see you all in person whenever possible! If you have questions, please feel free to contact me at student-affairs@cmea.org. Be well!

John Abucewicz
Student Affairs Commission Chair